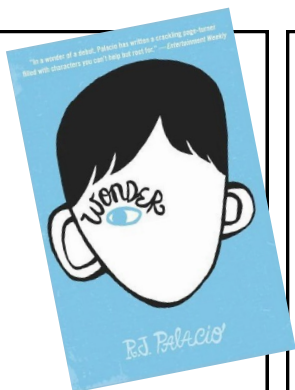




**Waddesdon Village Primary School**  
**Pathway to Excellence**  
**Year 6 Curriculum Newsletter**  
**Autumn 2 2022**



**English**

The main focus will be linked to this term's class novel: *'Wonder'* by R J Palacio

As well as prompting discussion around the issues faced by the central character, the book will inspire narrative writing on the theme of characters overcoming obstacles.

When writing, we will develop skills to create purposeful, effective sentences which show a range of grammatical features and include rich, powerful yet relevant vocabulary, cohesive devices to link sentences and paragraphs as well as effective use of punctuation including hyphens, dashes, colons and semi-colons.

The novel will also support development of reading comprehension skills through drawing inferences about characters' actions and feelings as well as considering, in detail, the vocabulary choices made by the author.

**Science**

*Evolution & Inheritance* and *Living Things & Habitats* will be our areas of focus. Considering how animals and plants adapt over time to survive and the evidence that supports this will inform our learning.

Our class novel and whole class reading lessons will help the children to deepen their comprehension and analysis skills further this term

Last term, several children challenged themselves by selecting books from our Reading Rocket challenge as their reading books —it's wonderful to see them reading books that are thought-provoking and inspiring.

Autumn 2

**Have you ever Wondered?**

**Weekly schedule:**

- Mon: Homework and Reading Records to be handed in (Reading records given back out)
- Tues:
- Wed: All day Miss Screech (Incl. PE)
- Thurs: PM Mrs Patel & Exposure Sports (PE) (Homework books given back out)
- Friday:

**Mathematics**

The term will begin with a recap of short division before moving onto formal long division. We will explore how we can use existing knowledge of partitioning and place value to solve and check division problems.

Following this, there will be fractions work: using highest common factors to simplify and lowest common multiples to order and compare. Adding, subtracting, multiplying and dividing of fractions will also be revisited. We will also be finding fractions of shapes and amounts.

**PE**

Dance and football will help the class to develop skills to support other team members, learn from their team's previous performance and offer suggestions to improve.

**RE**

Class 6 will consider Christianity and the question: 'Do Christian celebrations and traditions help Christians understand who Jesus was and why he was born?'





**Waddesdon Village Primary School**  
**Pathway to Excellence**  
**Year 6 Curriculum Newsletter**  
**Autumn 2 2022**



**History**



Our Past Productions workshop will inspire our learning early on. Throughout the term we will be discovering the fascinating Maya civilisation by learning about their buildings, gods, sacrifices, food, number system and calendar . This will allow for comparison with other historical eras and events as well as our lives

**Art**

Our Maya history work will inspire art pieces created using printing.

**Music**

Film music

**Computing**

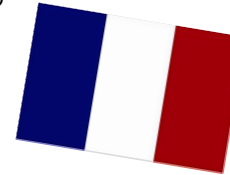
Children will consider the impact technology has on their health, wellbeing & lifestyle in the eSafety lessons.

Additionally, they will be exploring 3D modelling using Tinkercad.



**MFL**

Mr Mitchener will continue to teach class 6 how to talk in full sentences in French for everyday topics including likes, dislikes, hobbies, clothes, school and food.



Autumn 2

**Have you ever Wondered?**

**PSHE**

'Celebrating Difference'

This sequence of lessons looks at disabilities and attitudes towards them. It considers exclusion and bullying and explores why differences amongst people is positive.

Your support is vital and much appreciated. Please feel free to arrange to see me or chat on the phone via the school office.

Mrs Swanson

**How you can support your child at home:**

Show them how you read for pleasure and discuss the areas reading helps you with each day.

Ask them to tell you about their reading book and discuss likes, dislikes and questions they have.

Support as needed with this term's homework linked to division and reading.

Explore weights and capacity of household items such as flour, crisps, cheese, squash and milk.

**Important Dates:**

Monday 7th Nov	Maya Workshop
Wednesday 9th Nov	2:30 Open afternoon for parents to visit class 6
Friday 18th Nov	Children in Need
Tuesday 22nd Nov	EMATs Ambulance
Tuesday 22nd Nov	Parents' evening
Wednesday 23rd Nov	Parents' evening
Tuesday 20th Dec	KS2 Christmas Party & last day of term