



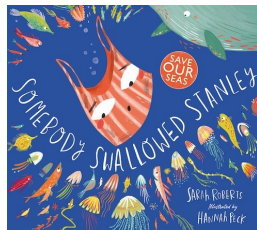
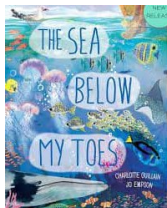
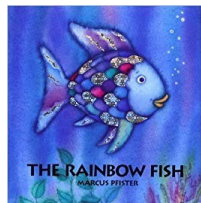
**Waddesdon Village Primary School**  
**Pathway to Excellence**  
**Year R Curriculum Newsletter**  
**Summer 2 2024**



### English

We will be developing our understanding of different types of writing such as posters, letters and stories through writing our own and reading different examples. We will be working on being able to discuss what we have read. Our key books this term will be:

- **The Sea Below My Toes**
- **The Rainbow Fish**
- **Somebody Swallowed Stanley**

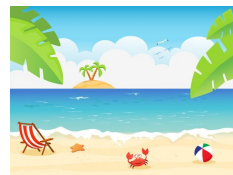


### Physical Development

We will continue with daily funky finger sessions and letter formation practice. In P.E. sessions we will be thinking about our sports day activities and learning about what to do as well as having an athletics focus.

## Summer 2

### Fun at the Seaside



### General Introduction:

I hope you all had a lovely half term and are ready for your child's last half term in Reception – how time flies! We cannot wait to make this last half term an exciting one and begin to prepare your child for a successful transition into KS1.

### Mathematics

We will begin to generalise about 'one more than' and 'one less than' numbers within 10. We will continue to identify when sets can be subitised and when counting is necessary and we will be developing conceptual subitising skills including when using a rekenrek. We will also continue to work on composition of number and number bonds.

### Understanding the World

We will adventure to different places around the world and find out how they are different to where we live and develop some basic map skills. We will also be comparing the differences between sea-side towns in the past and present day.

### Expressive Arts and Design

We will be developing our junk modelling skills by making telescopes and designing our own seaside towns and beach huts. We will also be learning about the four different groups of musical instruments, following a beat using an untuned instrument and performing a practiced song.

### Weekly schedules:

PE is on a Thursday  
Library is on Friday  
Reading Books get changed on a Friday but remain in school until Monday.



**Waddesdon Village Primary School**  
**Pathway to Excellence**  
**Year R Curriculum Newsletter**  
**Summer 2 2024**



**Communication and Language;**  
 We will be learning to listen to others opinions and put forward our own ideas, as well as asking and answering questions about stories we have read and listened to. We will also be learning the importance of communication in order to work well as a team.

**Final word**  
 Just a few reminders:  
 Please check your child's book bag as sometimes there are letters in there for you.  
 Please make sure that all school uniform, PE kits and coats are named.  
 As the weather gets warmer it is important that your child comes to school wearing sun cream and with a hat and water bottle.  
 Thank you again for all your support.

**Personal, Social and Emotional**  
 We will be considering other people's viewpoints and pretending to put ourselves in other people's shoes. We will be discussing activities we like and don't like. We will also be considering what is special about our world and reflecting on how we think the world was created and what steps we can take to protect our planet.



**Transition**  
 This half-term we be focusing on change and challenges. We will be working together to build resilience through team games and activities. We will also spend time building relationships and focus on our achievements this year and our hopes and what we are looking forward to in Class One.

Please note: This is only a guide. Due to the nature of Early Years the learning follows the children's interests, so other activities may crop up as the children change and learn.

**How you can support your child at home:**  
 Please make sure you listen to your child read daily, little and often is best. Sometimes reading the same book can feel repetitive but it is crucial to read the book more than once to develop fluency and comprehension.  
 Please also continue to practise the Harder To Read and Spell Words (HRSW) in your child's reading folder. Daily practise of these words will support your child's ability to sight read them independently in their reading books.

**Important Dates:**

Mon 3rd June	Inset Day
Tues 4th June	Return to school
Wed 12th June	Father's Day craft after noon
Mon 24th June	Open Classroom 2:30pm
Fri 28th June	Summer Fete
Tues 2nd July	Transition day
Fri 5th July	Sports day (AM)
Thurs 11th July	Beside the seaside - Theme day
Tues 23rd July	End of Term (1pm Finish)

**Show and Tell Timetable**

7/6/24 – Mentmore
14/6/24 – Ascott
21/6/24 – Claydon
28/6/24 – no show and tell
5/7/24 – Hartwell
12/7/24 – Mentmore
19/7/24 – Ascott