



Waddesdon Village Primary School

Pathway to Excellence

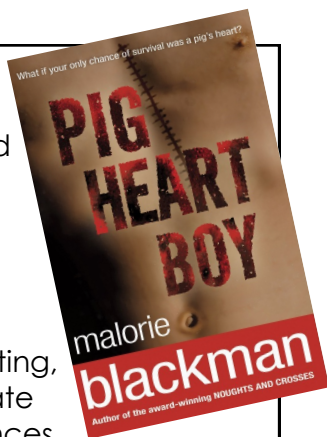
Year 6 Curriculum Newsletter

Spring 1 2023



English

The main focus will be linked to this term's class novel: *'Pig Heart Boy'* by Malorie Blackman



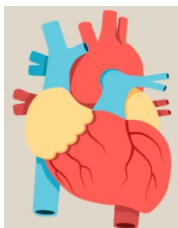
This will inspire writing of persuasive letters. When writing, we will develop skills to create purposeful, effective sentences which show a range of grammatical features and include rich, powerful yet relevant vocabulary, cohesive devices to link sentences and paragraphs as well as effective use of a range of punctuation.

The novel will also support development of reading comprehension skills through drawing inferences about characters' actions and feelings as well as considering, the moral and social dilemma the family faces.

Science

Animals including Humans

This term's science links well to our novel as we will learn about the circulatory system and how to maintain a healthy lifestyle.



The 'Reading Rocket Challenge' continues to encourage children to read a wide variety of vocabulary-rich, well-written classic and modern books. The skill of more deeply understanding texts and the language within them is vital in year 6. Please support your child by discussing the books they choose from the suggested list; maybe even read one or two yourself to help have a more meaningful chat.

As a reminder, Class 6 homework will be the SAT Buster books this term. Please see the Home Learning sheet for full details.

Spring 1

Have a Heart



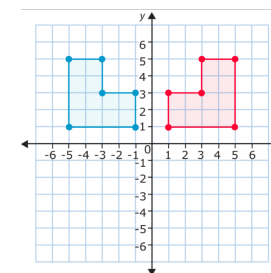
Weekly schedule:

- Mon: Homework (SAT BUSTERS & Reading Records) due in
- Tues:
- Wed: PE AM & Mrs Leslie PM
- Thurs: PM Mrs Patel & Exposure Sport (PE)

Mathematics

The term will continue with fractions work and how to multiply, and divide with these as well as finding fractions of amounts.

Will we also explore geometry: working in the four quadrants with co-ordinates plus translating and reflecting shapes using co-ordinates and across axes.



Additionally, each week, we will practise arithmetic skills by completing SAT style questions.

PE

Rugby will help to develop skills to support team members, learn from their team's previous performance in a competitive sport and offer suggestions to improve. Our gymnastics work will develop balance and agility skills.

RE

Class 6 will consider Christianity and the question: 'Is anything ever eternal?'

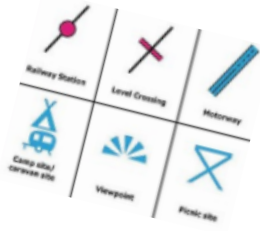


Waddesdon Village Primary School
Pathway to Excellence
Year 6 Curriculum Newsletter
Spring 1 2023



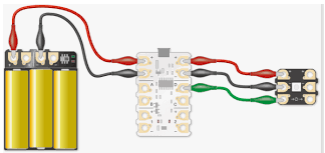
Geography

Maps, symbols and keys



DT

Children will create a park/fairground ride that can be operated via Crumble coding.



Music

Dynamics, Pitch and Texture
 (Theme: Fingal's Cave by Mendelssohn)



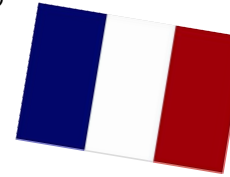
Computing

Children will further develop their coding skills through this term's DT unit. They will also look at spreadsheets.

Additionally, they will revisit online safety issues for eSafety Day in February and consider 'managing online information'.

MFL

Mr Mitchener will continue to teach class 6 how to talk in full sentences in French for everyday topics including likes, dislikes, hobbies, school and food.



PSHE

'Healthy Me'

This sequence of lessons looks at looking after ourselves and links well with the term's science work. Food, alcohol, drugs, emotional & mental health, emergency aid and managing stress are the key areas discussed.

As always, your support is vital and much appreciated. Please feel free to email any questions via the school office or see me after school on the playground.

Mrs Swanson

How you can support your child at home:

Show them how you read for pleasure and discuss the areas reading helps you each day.

Talk about the book they are currently reading as part of the Reading Rocket challenge.

Support as needed with the SAT Buster books and encourage your child to bring them back to school every Monday.



Times tables Rock Stars— encourage them to log on regularly at home.

Discuss which spellings they found tricky this week in their writing and encourage them to try a range of strategies to help remember.

Important Dates:

- Thursday 12th Jan Inter-House competition
- 16th-18th Jan Bikeability
- Friday 10th Feb Last day of term