



# Waddesdon Village Primary School

School Lane, Waddesdon, Aylesbury, Bucks, HP18 0LQ

Headteacher: Laura Forchione BA

Tel: 01296 651237

E-mail: [office@waddesdonprimary.com](mailto:office@waddesdonprimary.com)

Website: [www.waddesdonprimary.com](http://www.waddesdonprimary.com)

A Pathway to Excellence

5th September 2024

Dear Parents and Carers,

## Parking and Pick-up Arrangements

Many of you will be only too aware of the difficulties we experience in providing a safe area for drop-off and pick-up for your children if they travel to one of the schools in Waddesdon.

Each year, we ask those parents who transport their children by car to be considerate to our neighbours and to be mindful of road safety.

Please can we ask you to remember:

- Before school, no cars should park in School Lane as this prevents the secondary school buses from parking safely to allow students to disembark
- After 2.55pm no cars (with the exception of taxis and students with disabilities) will be able to enter School Lane since the buses which pick up the secondary school children will have arrived by this time. Unfortunately, School Lane can easily become gridlocked if this is not adhered to.
- Between 3.10pm and 3.20pm the secondary school children will be supervised onto the buses
- At 3.20pm the school buses depart, followed by the cars from all three schools which have been waiting up to this point. This will allow any waiting cars to enter School Lane.
- In addition, **Silk Street**, by the War Memorial, is required for access to the Manor and **should not be used as a pick-up site at the end of the day**. Parents parking in this area will be asked to move with the suggestion that they make use of the Manor's overflow car park (see information below).

## Parking in Waddesdon and inconvenience to local residents and Waddesdon Manor

The pressure on parking leads parents to park in side streets and, at times, illegally. In the past this has resulted in accidents and causes significant distress to local residents. In particular, we field regular complaints or expressions of concern from residents in Goss Avenue, Sharp's Close, Grove Way, Baker Street, Chestnut Close and Golden Mede.

Working in partnership with you, traffic officers and Waddesdon Manor, we ask that you opt for one of the following:

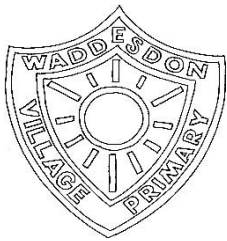
- **Leaving your car at home and walking to collect your child if you are within 20 minutes walking distance from the Primary School**

or

- **Parking your car in the Manor overflow car park** in the afternoon (indicated on the map overleaf).



Registered Charity Number 1191949



# Waddesdon Village Primary School

School Lane, Waddesdon, Aylesbury, Bucks, HP18 0LQ

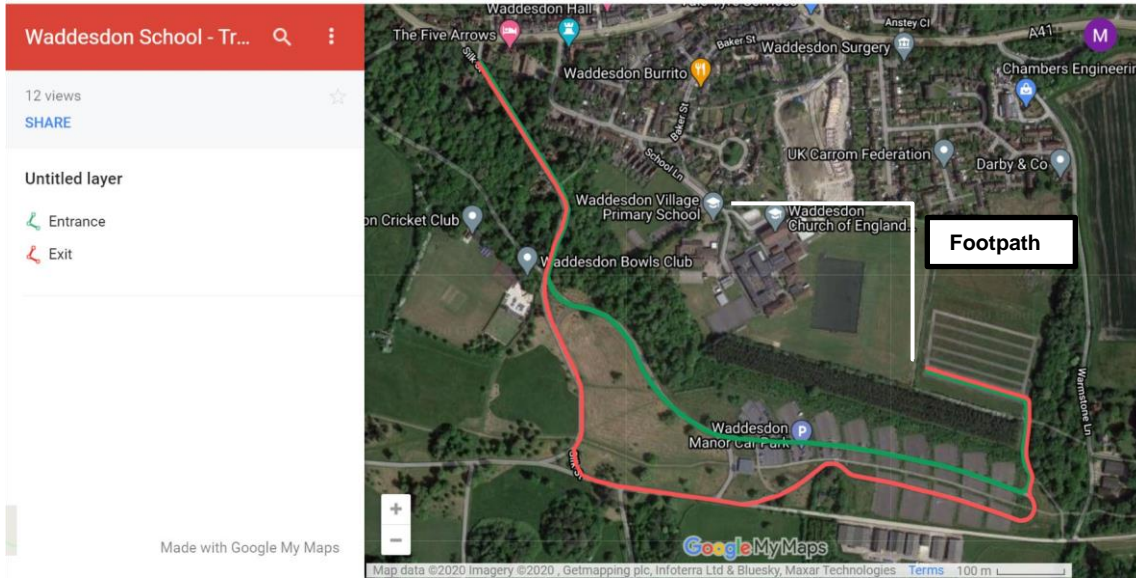
Headteacher: Laura Forchione BA

Tel: 01296 651237

E-mail: [office@waddesdonprimary.com](mailto:office@waddesdonprimary.com)

Website: [www.waddesdonprimary.com](http://www.waddesdonprimary.com)

A Pathway to Excellence



From the overflow car park, there is a footpath which runs along the perimeter of the secondary school which is a 10-minute walk away from the front of the two schools.

We appreciate that these arrangements may cause individual families a little added inconvenience, but adhered to collectively, they will support our young people, avoid the risk of a serious accident and also ensure that we can be good neighbours with the local residents and the Manor.

We are extremely grateful to Waddesdon Manor for their help in facilitating this solution and ask that you drive responsibly when on the Manor grounds. The parking system will be in place from **next week**, with the overflow car park available for pick-up between 2.45pm to 4pm daily, whether the Manor is open or not. On the days the Manor is closed, please use the call point on Silk Street to contact Waddesdon Security who will be happy to lower the bollards for you.

The red line on the map indicates the car route to the overflow car park, and the white line picks out the footpath students can use to meet your car there. Parents and carers of younger children can also use this footpath to collect their children from the Primary School or Little Oaks Pre-school.

Yours sincerely,

Matthew Abbott  
Waddesdon CE School

Laura Forchione  
Waddesdon Village Primary School

Debbie Albrighton  
Little Oaks Pre-school



Registered Charity Number 1191949