



Welcome to Class 6

KS2 Assessment



- Children are assessed against age-related expectations in the SATS for maths, reading and spelling, punctuation and grammar (SPaG)
- Writing is assessed by the teacher against the national framework.
- Ongoing assessments in all year groups.
- Parents' evenings happen twice a year when you will get an interim report showing how your child is progressing.

Assessment



Pupils attainment and progress will be reported to you as:

Attainment

B= Below

WT= Working Towards

EXS= Expected

GDS= Greater Depth

Progress

B= Below

EXS= Expected

BTE= Better than expected

KS2 SATs



- To show the progress made during time at primary school
- Areas assessed in English and maths are in-line with National curriculum and WVPS curriculum
- Children become familiar and comfortable with format
- Trying their best but not worrying is a key aim
- Some children may have different arrangements

SATs: Monday 11th May to Thursday 14th May 2026

SATs Schedule



- **Monday May 11th 2026:** Spelling, punctuation and grammar (Grammar/Punctuation Test) – 45 minutes
- **Monday May 11th 2026:** Spelling, punctuation and grammar (Spelling Test) – 20 minutes
- **Tuesday May 13th 2026:** Reading Test – 60 minutes
- **Wednesday May 13th 2026:** Maths Paper 1 (Arithmetic) – 30 minutes
- **Wednesday May 13th 2026:** Maths Paper 2 (Reasoning) – 40 minutes
- **Thursday May 14th 2026:** Maths Paper 3 (Reasoning) – 40 minute

Homework



1. Reading

- Read for 20 minutes each day.
- Record the 4 days of reading in Reading Record and hand this in each Monday. This will be returned on same day.

Parents can support by discussing reading books with children; sharing the books, articles etc. they read with their children and ensuring children are reading daily and completing their Reading Record.

2. English or maths activity

- Select one task from the list and complete in homework book.

Hand in on Monday. Books will be returned each Thursday at the latest.

Parents can support by encouraging selection of both maths and English tasks over the half term; providing space and time for the task to be complete and helping out or questioning as needed as well as encouraging neat presentation with joined handwriting.

Maths

- Log on to Times Tables Rock Stars and Numbots at home at least 3 times each week to practise your tables and arithmetic skills. (Optional for classes 5 & 6)

Parents can support by providing space and time for this; showing an interest and praising children's progress and practising tables and mental maths skills on car journeys, walks to school etc.

Rewards – house points, stickers, certificates

Sanction – Missing break time/lunch

**SAT Busters
from January**



SATs support

SAT Busters from January

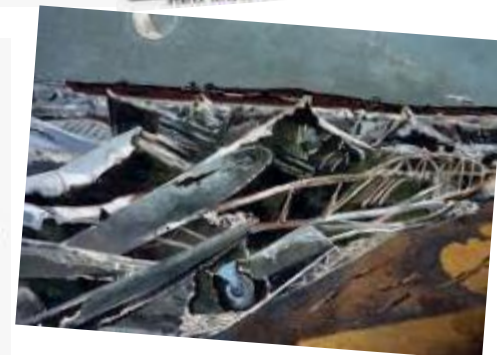
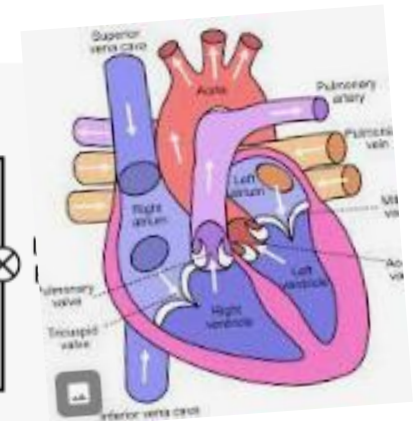
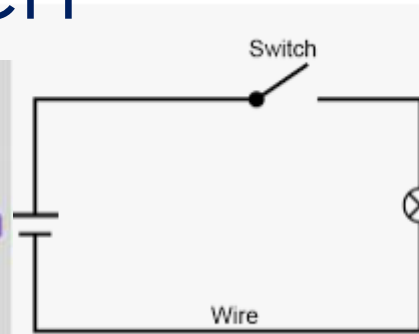


School price
around £6.50
rather than
RRP £14.

SATs is just one aspect... Class 6 follow a wide curriculum



History, geography, science, PE,
music, computing, art, DT, PSHE,
French





Communication

If you require a phone call or meeting, please arrange this through the School Office.

I'm always happy to chat things through or answer queries.

Mrs Smith