



Waddesdon Village Primary School
Pathway to Excellence
Year 1 Curriculum Newsletter
Autumn 2

Topic: Once upon a time



Welcome back to Class 1!

Welcome back!
I hope you had a wonderful break this half term.

Our topic this term is 'Once Upon a Time' I hope you are looking forward to a term full of exciting, creative and inspiring learning opportunities.

Weekly schedules:

PE is on a Monday and a Friday. The children will need to come dressed for PE sessions in suitable clothing for the weather.

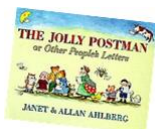
Library will be on a Tuesday.

Golden Time and Show and Tell is on a Friday.

Reading books will be changed on a Monday. Please bring in reading folders everyday.

English

Our core text this half term is *The Jolly Postman* and we will be exploring this and other stories through The Curious Quests.



In our writing, we will be concentrating on capital letters and full stops to ensure that we are using them correctly to write sentences. We will be starting to extend and add detail to our sentences with 'and' and adjectives.

We will also be focusing on our handwriting. For this half term we will continue to focus on letter formation in a print style.

In addition to this, children will have daily phonics lessons and weekly guided reading sessions.

Mathematics

This term we will continue to follow our **NCETM Mastery Scheme**. We will be focusing on comparison of quantities and part whole relationships.

We will be beginning to think about using different models to represent what we are doing in our number work. Particularly, we will focus on using part-part-whole models to support us as we transition from solely using concrete resources to expressing our understanding in written forms.

We will also be working on developing a deeper understanding of the numbers 0-5, both through counting forwards and backwards and through partitioning.

Phonics



In year 1, we continue with the daily phonics lesson that the children began in reception, using the ELS phonics scheme.

This half term we will be focusing on completing our Phase 5 sounds and then move on to consolidating and reviewing what we have learned.



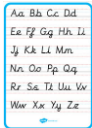
Humanities

This half term, Year 1 will be focusing on geography and learning about our local area. We will think about the differences between a village and a town and what types of buildings are commonly found in both.





Waddesdon Village Primary School
Pathway to Excellence
Year 1 Curriculum Newsletter
Autumn 2

<p>Art</p> <p>This term we will be exploring the skill of collaging. We will be using a range of materials creatively to design and make products. We will also be developing our use of colour, pattern, shape and texture.</p> <p>We will also be designing and creating our own salt dough gingerbread man from the traditional tale 'The Gingerbread Man'.</p>	<p>Science</p> <p>This term we will continue our learning about 'Everyday Materials'. We will be working scientifically to identify which materials will be the most suitable to keep Goldilocks' porridge warm; which material will keep the Big Bad Wolf dry; and how we can make our own paper to write letters.</p>
<p>Computing</p>  <p>This half term, we will be using the Bee Bots to explore algorithms and how we can program a device to carry out a simple task. We will be using the Bee Bots to follow maps from 'The Jolly Postman'.</p>	<p>PSHE</p>  <p>Our theme for this term is 'Family and Relationships' and we will be thinking about families, our own and other people's, and about friendships. We will be looking at what makes a good friendship and how to handle conflict in our friendships with others. Additionally, we will continue to work on the zones of regulation and how we can identify and regulate our own emotions.</p>
<p>Music</p> <p>We will be learning about tempo in our music lessons this half term and how we can change tempo to affect the piece of music.</p> <p>We will also be practicing for our EYFS and KS1 Christmas Performance.</p>	<p>RE</p> <p>This term we will be exploring 'The Christmas Story' (Christianity). We will also explore the question 'What gifts might Christians in my town have given to Jesus if he had been born here rather than in Bethlehem?'</p>
<p>PE</p> <p>In PE we will be beginning to work on dance. We will focus on moving our bodies in a way that expresses emotion and story and on linking movements together. We will combine this with our music learning about pulse from last half term to move our bodies in time to the music.</p>	<p>Handwriting</p> <p>We will spend this term refining and perfecting our print handwriting, ensuring that all of our letters are formed correctly and on the line.</p> 
<p>How you can support your child at home?</p> <p>Reading: Children are encouraged to read as often as possible at home, preferably 15 minutes every day. This does not always have to be their reading book though. Listening to an adult read is also a valuable experience where they will hear a rich and varied vocabulary which will help develop their writing. We will change books weekly on a Monday. Unfortunately, if a book is not returned, your child will not receive a new one. Please write in their reading record when they have read so we know we can change the book. More information can be found in the Reading Record.</p> <p>Maths: Numbots is a great way for children to practise their addition and subtraction skills with a focus on number bonds. Your child's log in information can be found in their reading record book.</p>	



Waddesdon Village Primary School
Pathway to Excellence
Year 1 Curriculum Newsletter
Autumn 2

Important Dates:

12th Nov Open Afternoon (2:30pm)
14th Nov Children In Need Muffi Day
25th & 27th Nov Parents' Evenings
8th Dec Dress Rehearsal
9th Dec KS1 Performance (2 pm)
&
Flu immunisations
10th Dec KS1 Performance (6 pm)

12th Dec Christmas Muffi Day
15th Dec KS1 Christmas Party
16th Dec Christmas Dinner
17th Dec Christmas Disco
19th Dec Last day of term

Show and Tell Timetable

7/11/25 – Claydon
14/11/25 – Hartwell
21/11/25 – Mentmore
28/11/25 – Ascott
5/12/25 – Claydon
12/12/25 – Hartwell
19/12/25 – Mentmore